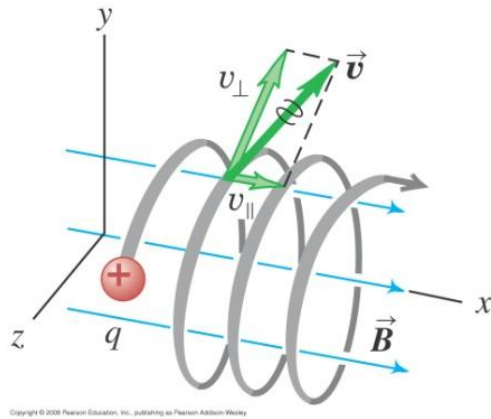
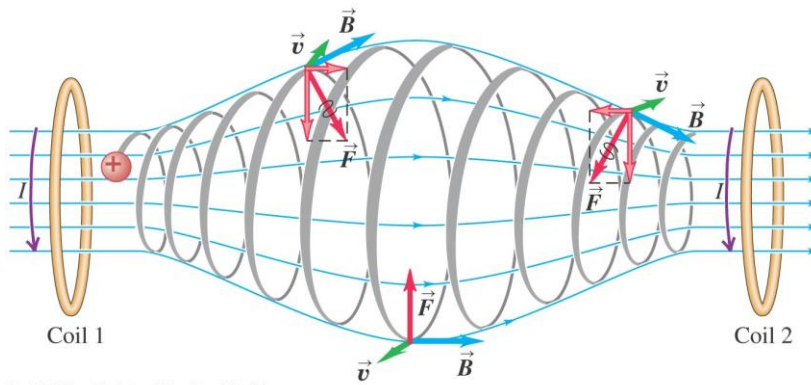


This particle's motion has components both parallel (v_{\parallel}) and perpendicular (v_{\perp}) to the magnetic field, so it moves in a helical path.



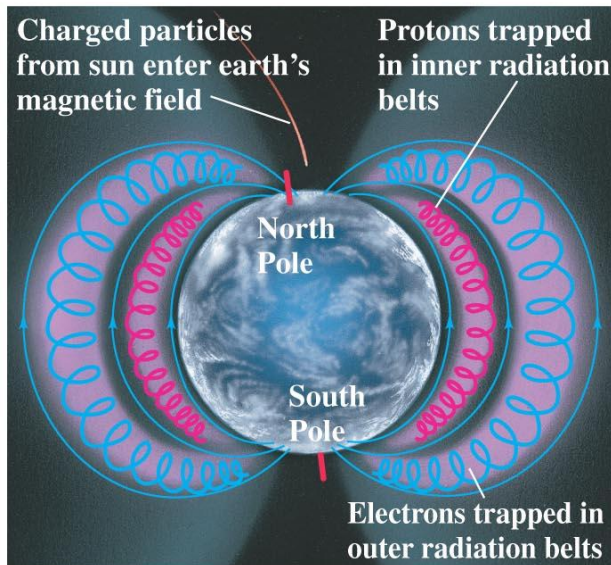
Copyright © 2008 Pearson Education, Inc., publishing as Pearson Addison-Wesley



Copyright © 2008 Pearson Education, Inc., publishing as Pearson Addison-Wesley

(a)

(b)



Copyright © 2008 Pearson Education, Inc., publishing as Pearson Addison-Wesley

